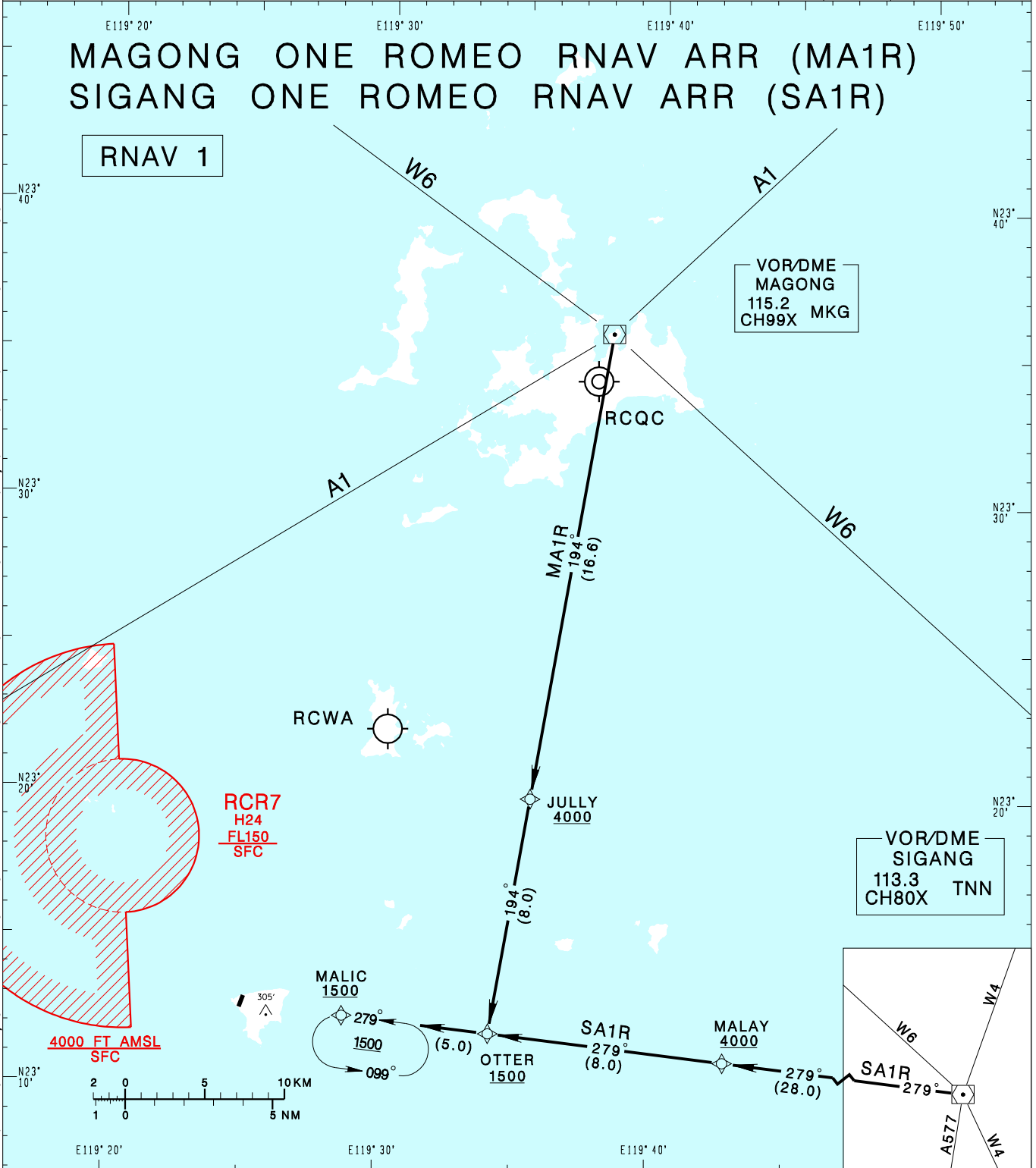


**七美機場**  
QIMEI AD

RCCM  
STAR

KAOSIUNG APP 128.1 129.9	QIMEI TWR 118.1	VAR 4° W 	
Apt Elev: 63'	Trans Level: FL130		
BEARINGS ARE MAGNETIC; DISTANCES ARE NAUTICAL MILES; ELEVATIONS, HEIGHTS IN FEET			
MSA ARP 25NM			

CHANGES: NEW PAGE NUMBER, UPDATE RESTRICTED AREA VERTICAL LIMITS REPRESENTATION, GRADUATION MARKS AND SCALE BAR ADDED



MA1R: From MKG to JULLY, OTTER, then MALIC.  
SA1R: From TNN to MALAY, OTTER, then MALIC.

**Note**  
1. If unable to maintain VFR before MALIC, maintain 1,500 and hold at MALIC.  
2. Critical DME & DME gap not surveyed.  
3. Radar monitoring required.